

CLINICAL QUIZ

Left Abdominal Mass. What could it be?

HAYATI F^{1,3}, AZIZAN N², CHONG TH³, NIK AMIN S¹, ZAINAL ABIDIN ZA⁴

¹Department of Surgery, ²Department of Pathobiology and Medical Diagnostic, Faculty of Medicine and Health Sciences, Universiti Malaysia Sabah, Sabah, Malaysia.

³Department of Surgery, Queen Elizabeth Hospital, Ministry of Health Malaysia, Kota Kinabalu, Sabah, Malaysia.

⁴Department of General Surgery, Surgical Sciences Cluster, Faculty of Medicine, Universiti Teknologi MARA, Sungai Buloh, Malaysia

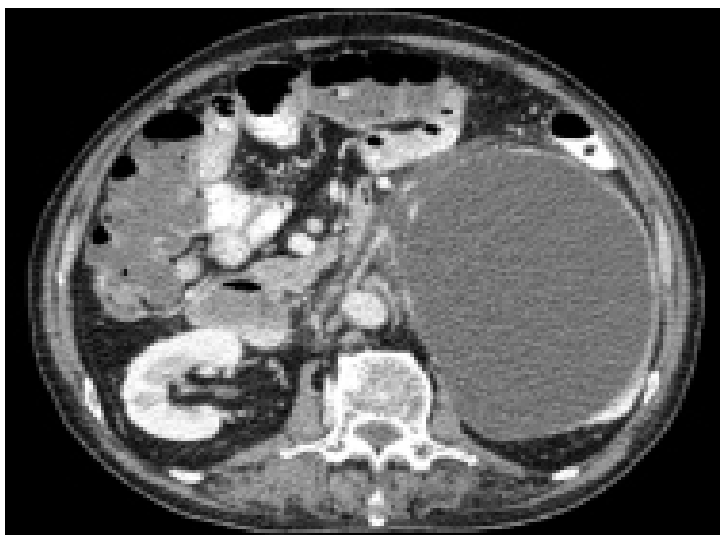


Figure 1: Contrasted computed tomography showing huge left homogenous and regular retroperitoneal lesion with peripheral enhancement on axial view

Address for correspondence and reprint requests: Firdaus Hayati. Department of Surgery, Faculty of Medicine and Health Sciences, Universiti Malaysia Sabah, Kota Kinabalu, Sabah, Malaysia. Tel: +088-320000 ext. 611029 E-mail: firdaushayati@gmail.com



Figure 2: Contrasted computed tomography showing huge left homogenous lesion with peripheral enhancement on coronal view occupying the whole left side of the abdomen

QUESTION

A healthy 63-year-old male, presented to the Emergency Department with a complaint of left lumbar colicky pain for 4 days. It was associated with no bowel output for 3 days and abdominal distension for 2 days. He otherwise denied vomiting, fever, and constitutional symptoms. He has never experienced these symptoms before. Clinically, he was pink and not cachexic. He was tachycardic with a heart rate of 105 beats per minute. His abdomen was grossly distended and tender at left lumbar region. Left kidney was slightly ballotable but limited due to pain. Biochemically, his renal function was deranged with a creatinine of 157.8 mol/L (eGFR of 41 ml/min/1.73m²). He had a total white cell count of 24 x 10³/μL. Microscopic examination of the urine showed 5+ erythrocyte. Spot the radiological diagnosis and provide a brief management.